



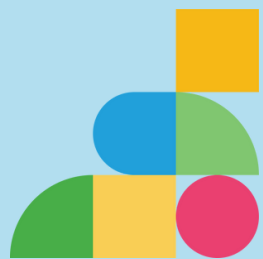
# SWLSTG Education Wellbeing Service

What did parents say about our parent  
webinar series?

## Autumn 2024 Summary Report

### Sutton Borough

South West London Education Wellbeing Service offers a series of engaging Primary, Secondary and Early Years Webinars to all parents in our boroughs. These provide accessible evidence-based and best practice information led by Senior NHS Mental Health Practitioners for supporting children and family wellbeing across a range of important topics, providing resources and signposting throughout the year.



## Sutton Primary Schools – Parent Webinar Signups – Autumn Term

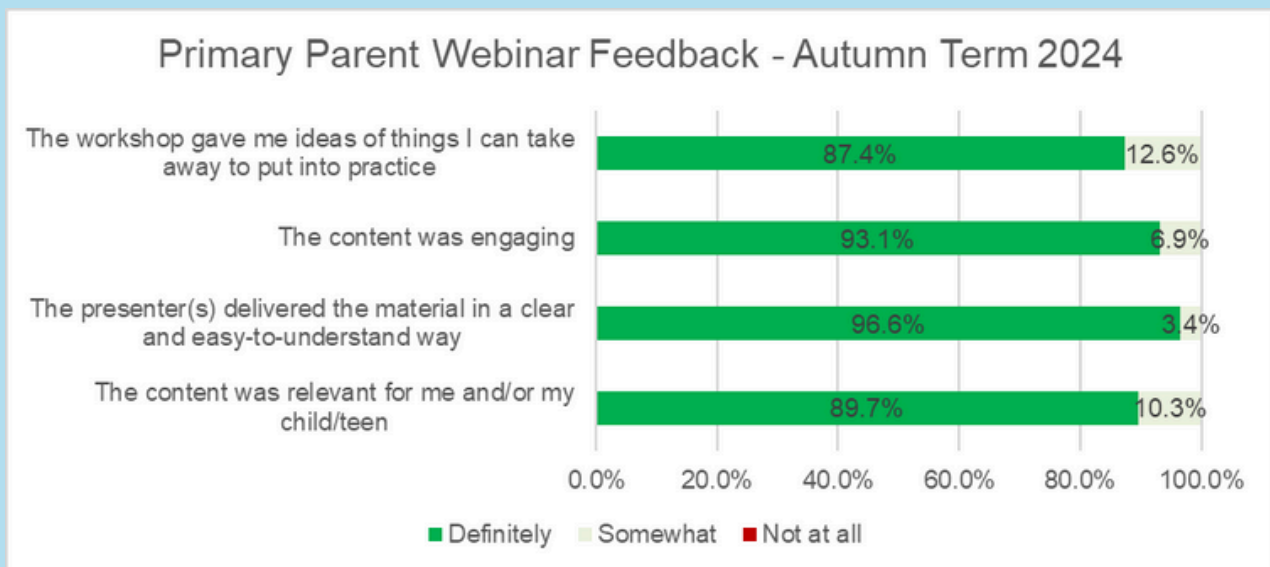
Thank you to the below primary schools who have advertised and had parents attend our webinar series. Percentage per school of total number of parent signups across all primary parent webinars during the Autumn term in Sutton.

Abbey Primary School	0.4%	Foresters Primary School	0.6%	Stanley Park Infants	9.8%
All Saints Benhilton CofE	1.5%	Green Wrythe Primary	1.9%	Stanley Park Juniors	5.0%
All Saints Carshalton CofE	2.1%	Hackbridge Primary School	7.3%	Sutton High School	1.5%
Avenue Primary Academy	2.7%	Harris Junior Academy	4.4%	Tweeddale Primary School	0.2%
Bandon Hill Primary School	0.4%	High View Primary School	4.4%	Victor Seymour Infants	0.8%
Barrow Hedges Primary School	10.0%	Homefield Preparatory School	4.4%	Wallington Primary Academy	1.5%
Beddington Infants' School	1.3%	Lingfield Primary School Surre	0.2%	West Ashtead Primary Academ	0.2%
Beddington Park Academy	2.3%	Muschamp Primary	2.3%	Westbourne Primary School	1.0%
Brookfield Primary Academy	2.7%	Oak Field Primary School	0.4%	Wood Field Primary School	5.0%
Brookways School	0.2%	Other	1.9%		
Carew Academy	0.4%	Robin Hood Infants	0.2%		
Cheam Common Junior	0.6%	Robin Hood Junior School	2.9%		
Cheam Park Farm Primary	0.6%	Rushy Meadow Primary	0.6%		
Collingwood School and Nursery	0.8%	St Dunstan's Cheam CofE	2.5%		
Culvers House Primary School	1.5%	St Elphege's Schools	6.3%		
Devonshire Primary School	2.3%	St Mary's RC Infants School	1.7%		
Dorchester Primary School	0.4%	St Mary's RC Junior School	2.9%		

The Primary Schools with the highest number of parents who attended the universal webinar series in Sutton were Barrow Hedges, Stanley Park and Wood Field Primary Schools.

**If your school name is not on the above lists, none of your parents signed up to webinars this term. Please advertise these free webinars as part of your Education Wellbeing Services to support parent wellbeing. Please speak to your Education Wellbeing Service Lead for support, advice or discussion.**

## Primary School Webinars - Parent Feedback



### Primary School Parent Webinars

**Session Title:** Finding your Feet – Children’s Emotional Wellbeing and Starting School

**Dates run:** 10/07, 21/08, 22/08 and 11/09

**Total webinar signups:** 173

- 100% of Parents said they would recommend this and similar webinars to others
- 91% of Parents said the workshop definitely gave them ideas of what they can put into practice

*“I will remember to try out the regulating techniques.” “Regulate, relate reason, I like that!”*

*“I think it was really well balanced and delivered”*

**Session Title:** Through the school gates – overcoming daily challenges getting into school

**Dates run:** 23/09 lunch and evening session

**Total webinar signups:** 84

- 100% of Parents said they would recommend this and similar webinars to others
- 100% of Parents said the content was relevant for them and their children

*“I will remember to try to problem solve rather than reassure. Give less instructions.”*

*“I will look to keep routine, stay calm and validate my child’s emotions”*

*“A very good session”*

*“It would be good to have a session on supporting neurodivergent children into school in particular”*

**Session Title: Parenting a Primary Age Child with Autism****Dates run: 25/09, 07/10****Total webinar signups: 144**

- 100% of Parents said they would recommend this and similar webinars to others
- 90% of Parents said the workshop definitely gave them ideas of what they can put into practice

*"I'm going to look at doing more social stories with my son"*

*"I plan to use more visual aids, get more into the sensory world of my child, really inspiring stuff"*

*"This was a helpful overview of topics that can take a long time to grasp like eating issues, sleep etc – specific webinars on these topics would be helpful"*

**Session Title: Supporting Big Emotions and an Introduction to the Zones of Regulation****Dates run: 12/11 and 14/11****Total webinar signups: 425**

- 100% of Parents said they would recommend this and similar webinars to others
- 94% of Parents said the workshop definitely gave them ideas of what they can put into practice

*"Host was great and engaged really well with the comments – will be attending more in the future"*

*"Great workshop, I'll take away the regulate, relate and reason approach and giving them space"*

*"I would like more written examples of how to deal with different situations so we can refer to this when needed"*

## Early Years Sign-ups in Sutton – Autumn Term

Thank you to the below pre-schools and nursery settings who have advertised and had parents attend our webinar series:

Abbey Primary School	Collingwood	Magdalen Nursery	Spencer Nursery
All Saints	Elmwood Nursery	Manor Park Primary School	St Barnabas Nursery School
Avenue Primary School	Green Wrythe Primary School	Nonsuch Primary	St Elphege's RC Infants' School
Bandon Hill Primary School	Hackbridge Primary School	Not school age yet	St Mary's RC Infants School
Barrow Hedges Primary School	Harris Academy Hailing Park	Other	St.Barnabas Preschool
Brookfield Primary	Home school	Our Day Nursery	Sutton Little Pioneers Nursery
Bumpsa Daisies Nursery	Humpty dumpty pre school	Playhouse Day Nursery	The Carshalton Day Nursery
Cheam Baptist Preschool	Jancett	Preschool	The Play House Day Nursery
Cheam Common Infants	Little Garden	Rushy Meadow	Victor Seymour Infants
Cheam Park Farm Primary	Little Pioneers	Ruskin road preschool	Woodlands Nursery

The Sutton Early Years settings with the highest early years parent signups this term were Magdalen Nursery (9.8% of all Early Years Parent Signups in Sutton), Manor Park (9.8%), Collingwood (6.9%) and St Mary's RC Infants (6.9%).

**If your school name is not on the above lists, none of your parents signed up to webinars this term. Please advertise these free webinars as part of your Education Wellbeing Services to support parent wellbeing. Please speak to your Education Wellbeing Service Lead for support, advice or discussion.**

### New: Early Years Parent Webinars

#### **Session Title: Goodbyes and Goodnights**

**Dates run:** 16/09 and 18/09

**Total webinar signups:** 71

- 100% of Parents said they would recommend this and similar webinars to others

*"I learnt to not reassure so much and to manage my own emotions"*

*"Could you make it 8-9pm as I was putting my kids to bed"*

#### **Session Title: Toilet Time: Supporting your child with toilet training**

**Dates run:** 14/10 and 16/10

**Total webinar signups:** 186

- 90% of Parents said they would recommend this and similar webinars to others

*"Very useful, thank you"*

*"I learnt that I do not have to read for all signs of readiness"*

*"We would value a toilet training troubleshooting course for parents of children who have grasped the main things involved in training but have some issues like accidents, being wet etc"*



## ***Top tips and sharing good practice for advertising***

- Have the webinars been advertised regularly via email to parents?
- Have you used your social media channels to advertise the webinars directly?
- Could any of your parent champions circulate the webinars on any WhatsApp parents groups?
- Are the webinars visible in reception areas and spaces where parents will see them?

*Thank you for all of your help and support to promote the Education Wellbeing Service Webinars in your schools*

