

Peek into next week Year 2

Things to know for next week:

- ★ Thursday 12th December - Christmas jumper swap day in school. If you have any Christmas jumpers that you would like to swap, please bring in before 5th December to your class teacher. If you donate a jumper, your name will be on the list to know who can collect a new one on the 12th.
- ★ Saturday 7th December - Christmas Fair - 12pm-3pm
- ★ Our nativity performance dates are Wednesday 11th at 9:30am and Thursday 12th at 2pm. If you are able to come and watch, please could you fill in this form, so that we can be prepared with how many seats to put out for each day:
<https://forms.gle/7BGqJSPc9VLmLDry8>
- ★ Please could your child bring in their costume next week, so we can practise in our costumes. Thank you.

Please let us know as soon as possible if you can't provide a costume for your child, so we can find something in school.

Many thanks!

<u>Characters</u>	<u>Costumes</u>
Narrators	Black: t-shirt, dress, trousers, skirt, shorts etc
Emperor	Roman toga
Townspeople	Brown clothes: t-shirts, trousers, tunics etc
The Curious Sheep	White t-shirt, black leggings/ trousers + white fleece/ cardigan/ jacket (something that can be taken off)
Sheep	White t-shirt, black leggings/ trousers
Shepherds	Brown clothes and tea towels
Mary	Blue dress
Joseph	Brown clothes and tea towels
Wise Men: (Balthasar, Melchior, Caspar)	Cloak (red, purple, gold), black/ brown clothes
Angels	White dress, wings, halos

Enquiry Question of the week

Please take some time to ask your child the question and see how close your child is to answering the question fully. If they are finding it tricky, break down the answer together and see if they can continue to work on their learning at home.

Who was Florence Nightingale and why was she significant?

Ask your child what they have learned this week from their visit to the Florence Nightingale Museum.

Florence Nightingale was known as 'The Lady with the Lamp' - because she walked up and down the corridors of the hospital looking out for her patients. She was a nurse from 1844, and famously helped soldiers in the Crimean War (1854 - 1856). She improved how hospitals looked after patients and is known for making them cleaner and safer. She trained a team of nurses, and also then wrote books to help train nurses across the UK and beyond. She is a significant person in our history because of how she improved nursing and the quality of hospitals.

A summary of next week:

Spellings: where 'c' makes /s/ sound

Reading: Inference Skills

Writing: Understand the features of a non-chronological report (fact file).

Maths: 2D shapes.

History: Who was Mary Seacole? What makes her similar/different to Florence Nightingale?

R.E.: What do Christians mean by 'Jesus is the light of the world'? And our Discover Christmas workshop.

Lots of nativity practice!

A weekly overview (subject to change)

Monday	No PE kit needed - Discover Christmas Workshop
Tuesday	
Wednesday	Forest school.
Thursday	Reading Records will be checked, stickers given and new Little Wandle/ Big Cat books given out.
Friday	PE (outdoor). Home learning shared with the class - please make sure any completed work is returned by the following Friday.

Reading folders should be in school every day and taken home every evening.

Year 2 Home Learning - "Dip and Do"
Autumn Term Week 1



You must:

- Read daily at home for at least 20 minutes and record this in the Reading Record. Records are checked on a Thursday but please make sure the folder is in everyday.
- Learn the weekly spelling words which are sent home and assigned on Spelling Shed. These will be tested every Friday morning.
- Practise addition and subtraction skills on Numbots at least 3 times a week.

“Dip” into these tasks:

Gold

Christ Church with St Philip are holding a special service on 15th December to remember loved ones and raise funds for the Hospice. They want to decorate the church with stars in all different shapes and sizes for the event and have asked if we have any capacity to make some stars for them.

Stars can be created in any size and style you choose.
Please ensure they have a loop so they can be hung.
Donations to St. Raphael's Hospice can be made via the
unique QR code.



Completed stars should be delivered to Christ Church with
St Philip, Ruskin Drive, Worcester Park by 5pm on
Thursday 12th December

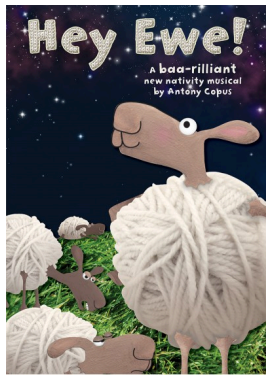
Further information, knitting and crochet patterns and
enquiries to Isobel Penny,
tel 07816 539513

Email: isobel.penny@houseofcolour.co.uk



Christ Church with St. Philip
Ruskin Drive Worcester Park KT48LG

Silver



Lines need to be learned off by heart by now. Please help us by reading your child's line with them out loud - they should all have scripts in their bag in order to do this.

Thank you!

Bronze

We are writing non-chronological reports about penguins over the next few weeks. Can you do your own research and write down some facts you learn about penguins?



Here are some websites to help get you started:

https://www.youtube.com/watch?v=_7pAD504_MY

<https://www.bbc.co.uk/iplayer/episode/m000ftm9/andys-aquatic-adventures-series-1-13-andy-and-the-chinstrap-penguins>

<https://kids.nationalgeographic.com/animals/birds/facts/humboldtpenguin>

<https://kids.britannica.com/kids/article/penguin/353611>

Spelling words to learn: write, wriggle, wrap, wrestle, written, wrecked, wrapped, wren, wrong, wrote